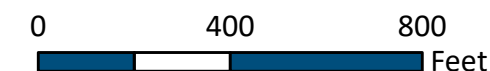


# APPENDIX A-2

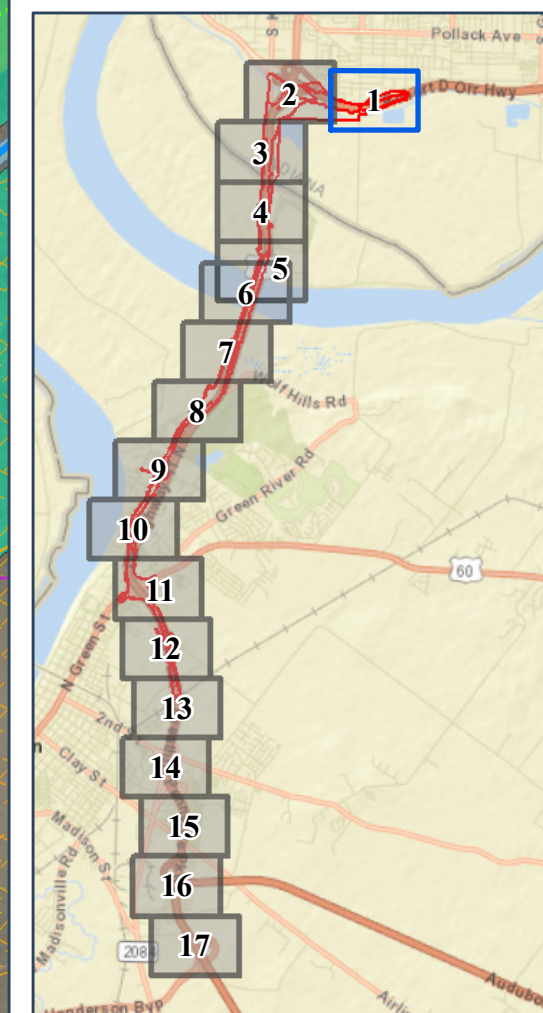
## West Alternative 2 Environmental Features Maps



## Appendix A-2 – Sheet 1 of 17



1 Inch = 400 Feet



- |   |  |   |   |   |  |
|---|--|---|---|---|--|
| <ul style="list-style-type: none"> <li>Construction Limits</li> <li>Preliminary Right-of-Way</li> <li>Bridge Deck</li> <li>Planned Subdivisions</li> <li>Removed Roads</li> <li>Historic Properties</li> <li>Section 6(f) Property</li> <li>Recreational Section 4(f) Property</li> </ul> | <b>Pedestrian/Bike Facilities</b><br><b>Planned</b> <ul style="list-style-type: none"> <li>Shared-Use Path</li> <li>On-Street Bike Facility</li> </ul> <b>Existing</b> <ul style="list-style-type: none"> <li>Shared-Use Path</li> <li>On-Street Bike Facility</li> <li>Recreation Trails</li> </ul> | <b>Relocations</b> <ul style="list-style-type: none"> <li>Residential</li> <li>Commercial</li> <li>Place of Worship</li> </ul> <b>Community Resources</b> <ul style="list-style-type: none"> <li>Library</li> <li>Place of Worship</li> <li>School</li> </ul> | <ul style="list-style-type: none"> <li>Wetland Reserve Program</li> <li>Imperiled Bat Conservation Fund</li> <li>Green River National Wildlife Refuge</li> <li>Green River National Wildlife Refuge Conservation Partnership Areas</li> <li>Existing Wetland Mitigation Sites</li> <li>Eagle Slough Natural Area</li> <li>Delineated Streams</li> <li>Open Water</li> </ul> | <ul style="list-style-type: none"> <li>Delineated Wetlands</li> </ul> <b>Wetland Types</b><br>PEM = Palustrine Emergent<br>PSS = Palustrine Scrub-Shrub<br>PFO = Palustrine Forested<br>Floodway<br>100- Year Floodplain<br>Noise Impacts<br>Likely Noise Barrier | <ul style="list-style-type: none"> <li>Cemetery</li> <li>Landfills</li> <li>Recognized Environmental Conditions Sites</li> <li>Petroleum Wells</li> <li>Approximate Landslide Location</li> <li>State Boundary Line</li> </ul> |
|---|--|---|---|---|--|
- Appendix A-2, page 1



Environmental Features

West Alternative 2

Appendix A-2 – Sheet 2 of 17



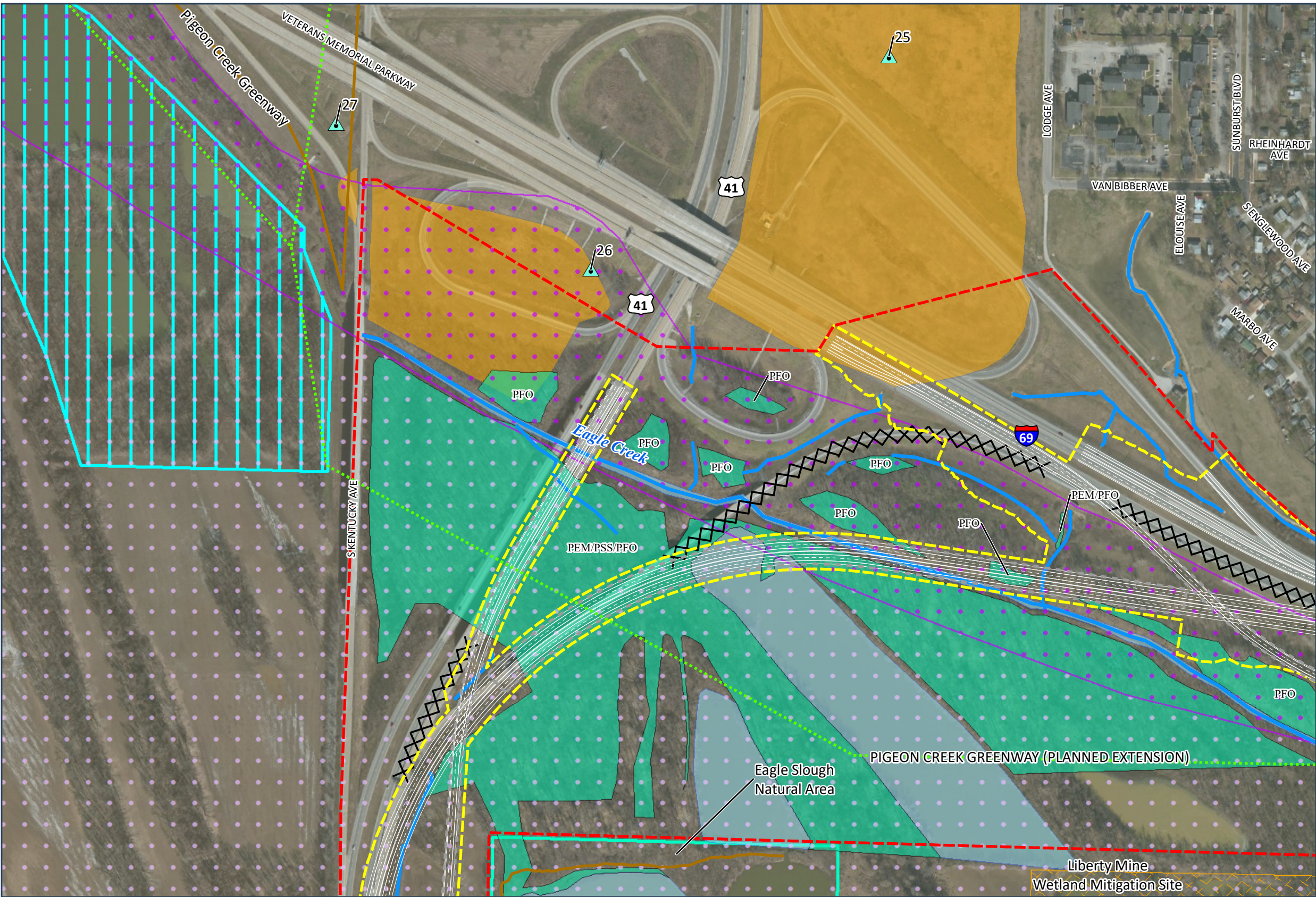
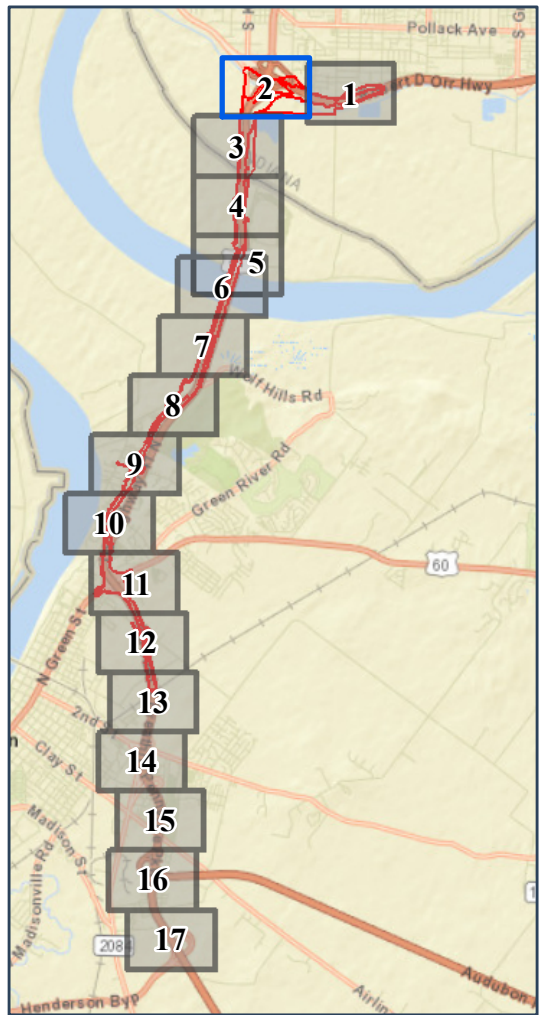
OHIO RIVER  
CROSSING

Final Environmental Impact Statement



0 400 800  
Feet

1 Inch = 400 Feet



- Construction Limits
- Preliminary Right-of-Way
- Bridge Deck
- Planned Subdivisions
- Removed Roads
- Historic Properties
- Section 6(f) Property
- Recreational Section 4(f) Property

- Pedestrian/Bike Facilities**
- Planned**
- Shared-Use Path
  - On-Street Bike Facility
- Existing**
- Shared-Use Path
  - On-Street Bike Facility
  - Recreation Trails

- Relocations**
- Residential
  - Commercial
  - Place of Worship
- Community Resources**
- Library
  - Place of Worship
  - School

- Wetland Reserve Program
- Imperiled Bat Conservation Fund
- Green River National Wildlife Refuge
- Green River National Wildlife Refuge Conservation Partnership Areas
- Existing Wetland Mitigation Sites
- Eagle Slough Natural Area
- Delineated Streams
- Open Water

- Delineated Wetlands
- Wetland Types**
- PEM = Palustrine Emergent  
PSS = Palustrine Scrub-Shrub  
PFO = Palustrine Forested
- Floodway
  - 100- Year Floodplain
  - Noise Impacts
  - Likely Noise Barrier

- Cemetery
- Landfills
- Recognized Environmental Conditions Sites
- Petroleum Wells
- Approximate Landslide Location
- State Boundary Line



Environmental Features

West Alternative 2

Appendix A-2 – Sheet 3 of 17



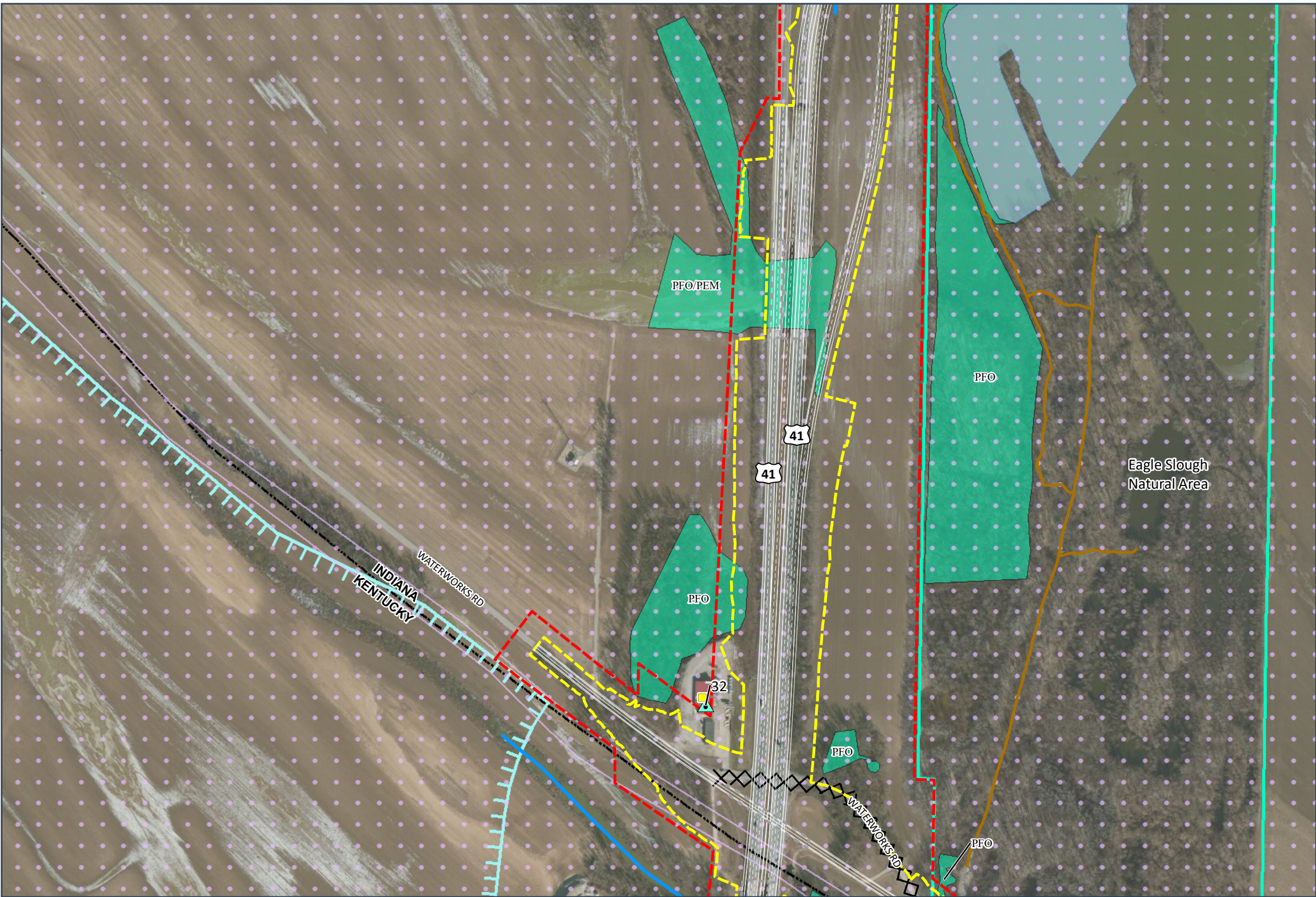
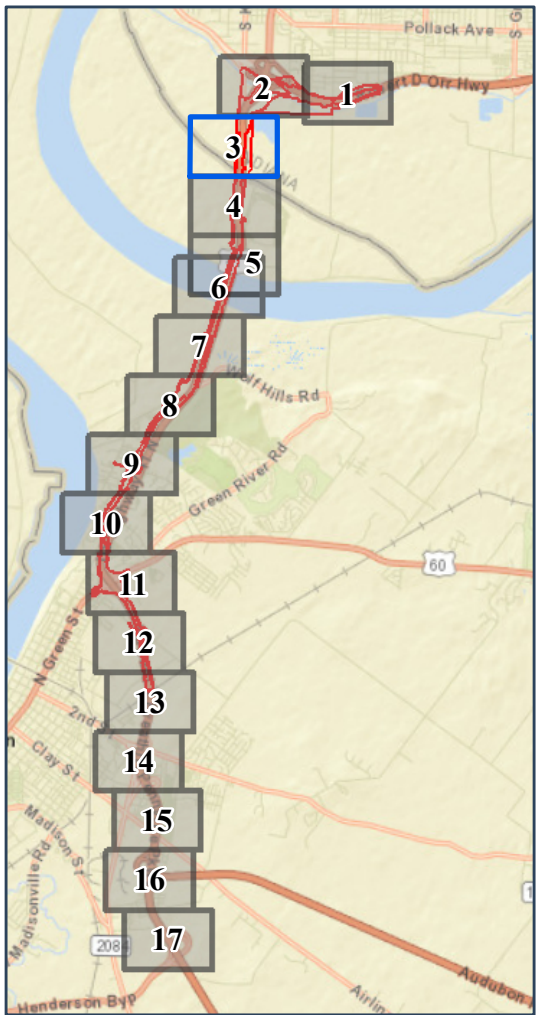
OHIO RIVER  
CROSSING

Final Environmental Impact Statement



0 400 800  
Feet

1 Inch = 400 Feet



- Construction Limits
- Preliminary Right-of-Way
- Bridge Deck
- Planned Subdivisions
- Removed Roads
- Historic Properties
- Section 6(f) Property
- Recreational Section 4(f) Property

- Pedestrian/Bike Facilities**
- Planned**
- Shared-Use Path
  - On-Street Bike Facility
- Existing**
- Shared-Use Path
  - On-Street Bike Facility
  - Recreation Trails

- Relocations**
- Residential
  - Commercial
  - Place of Worship
- Community Resources**
- Library
  - Place of Worship
  - School

- Wetland Reserve Program
- Imperiled Bat Conservation Fund
- Green River National Wildlife Refuge
- Green River National Wildlife Refuge Conservation Partnership Areas
- Existing Wetland Mitigation Sites
- Eagle Slough Natural Area
- Delineated Streams
- Open Water

- Delineated Wetlands
- Wetland Types**
- PEM = Palustrine Emergent  
PSS = Palustrine Scrub-Shrub  
PFO = Palustrine Forested
- Floodway
  - 100- Year Floodplain
  - Noise Impacts
  - Likely Noise Barrier

- Cemetery
- Landfills
- Recognized Environmental Conditions Sites
- Petroleum Wells
- Approximate Landslide Location
- State Boundary Line



# Environmental Features

## West Alternative 2

Appendix A-2 – Sheet 4 of 17

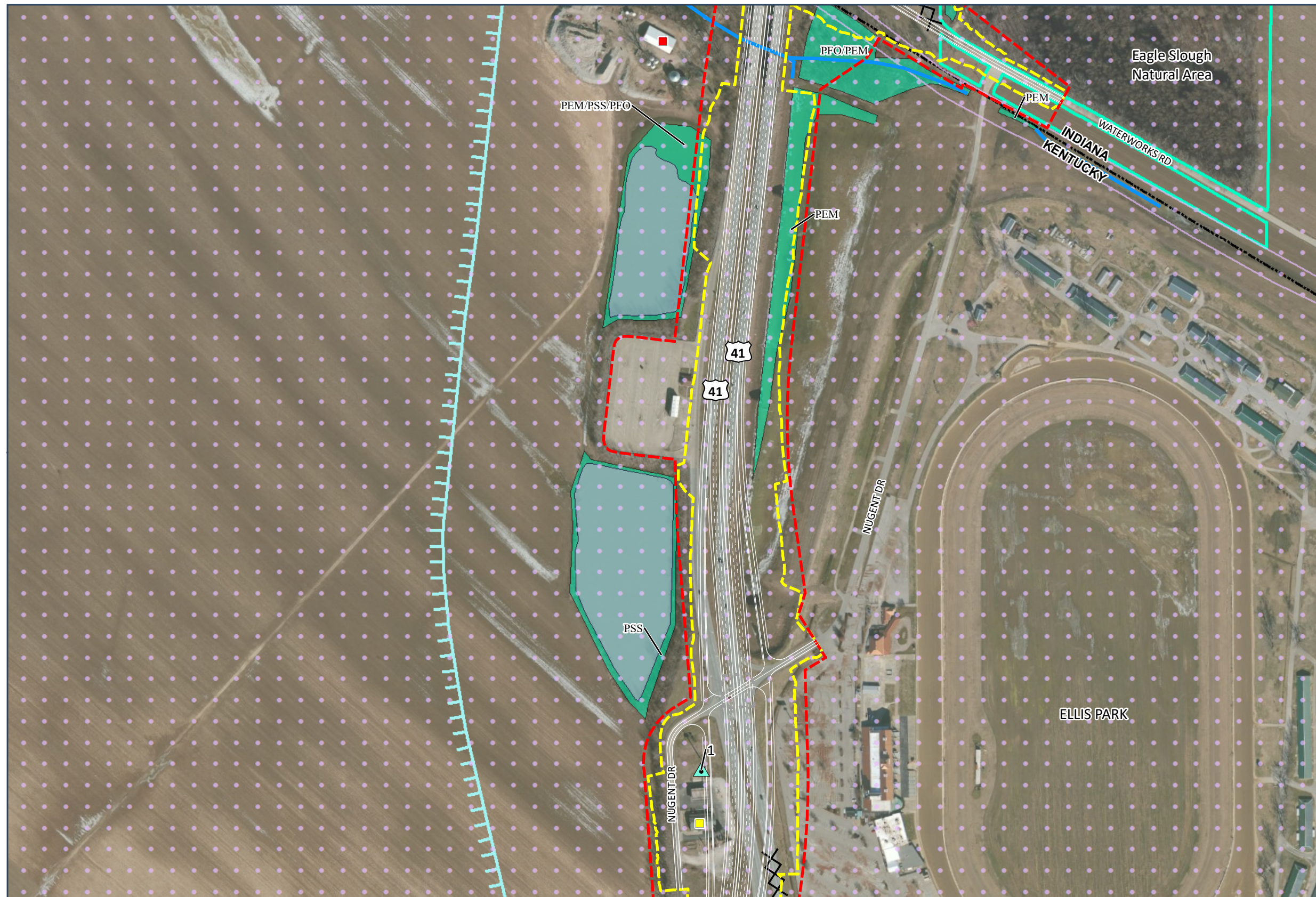
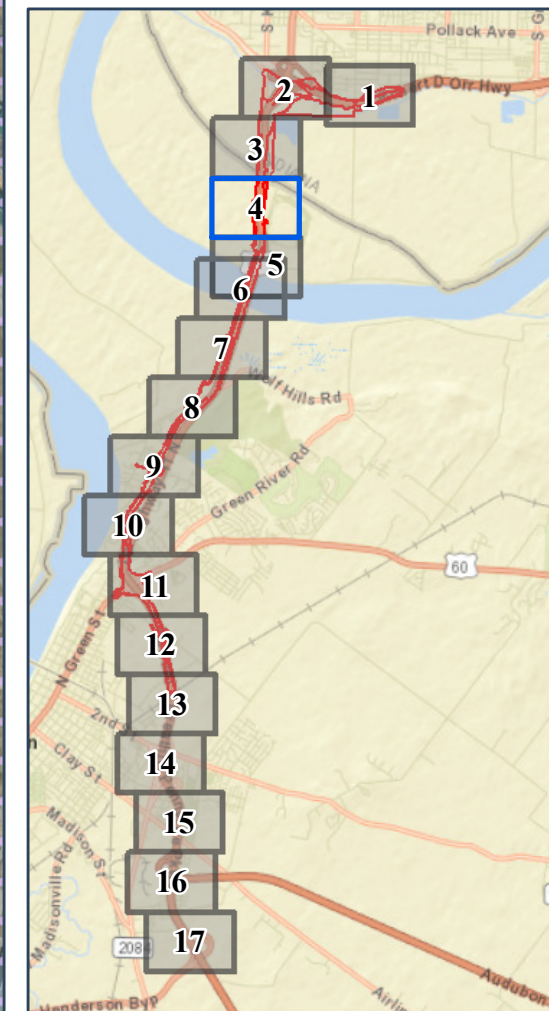


### Final Environmental Impact Statement



0 400 800 Feet

1 Inch = 400 Feet



<ul style="list-style-type: none"><li>Construction Limits</li><li>Preliminary Right-of-Way</li><li>Bridge Deck</li><li>Planned Subdivisions</li><li>Removed Roads</li><li>Historic Properties</li><li>Section 6(f) Property</li><li>Recreational Section 4(f) Property</li></ul>	<b>Pedestrian/Bike Facilities</b> <b>Planned</b> <ul style="list-style-type: none"><li>Shared-Use Path</li><li>On-Street Bike Facility</li></ul> <b>Existing</b> <ul style="list-style-type: none"><li>Shared-Use Path</li><li>On-Street Bike Facility</li><li>Recreation Trails</li></ul>	<b>Relocations</b> <ul style="list-style-type: none"><li>Residential</li><li>Commercial</li><li>Place of Worship</li></ul> <b>Community Resources</b> <ul style="list-style-type: none"><li>Library</li><li>Place of Worship</li><li>School</li></ul>	<ul style="list-style-type: none"><li>Wetland Reserve Program</li><li>Imperiled Bat Conservation Fund</li><li>Green River National Wildlife Refuge</li><li>Green River National Wildlife Refuge Conservation Partnership Areas</li><li>Existing Wetland Mitigation Sites</li><li>Eagle Slough Natural Area</li><li>Delineated Streams</li><li>Open Water</li></ul>	<ul style="list-style-type: none"><li>Delineated Wetlands</li></ul> <b>Wetland Types</b> <p>PEM = Palustrine Emergent PSS = Palustrine Scrub-Shrub PFO = Palustrine Forested</p> <ul style="list-style-type: none"><li>Floodway</li><li>100- Year Floodplain</li><li>Noise Impacts</li><li>Likely Noise Barrier</li></ul>	<ul style="list-style-type: none"><li>Cemetery</li><li>Landfills</li><li>Recognized Environmental Conditions Sites</li><li>Petroleum Wells</li><li>Approximate Landslide Location</li><li>State Boundary Line</li></ul>
--	---	---	--	---	---



Environmental Features

West Alternative 2

Appendix A-2 – Sheet 5 of 17



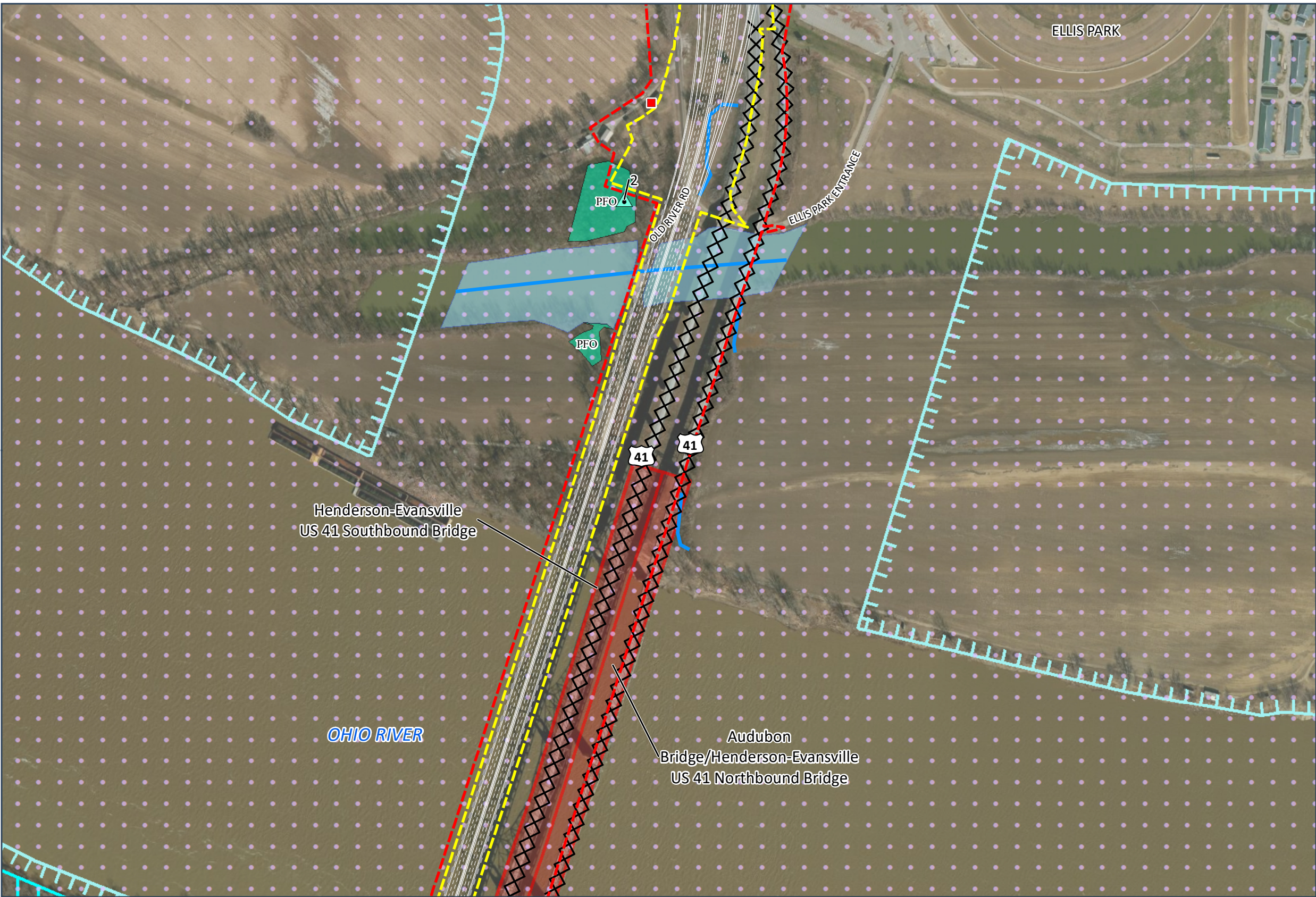
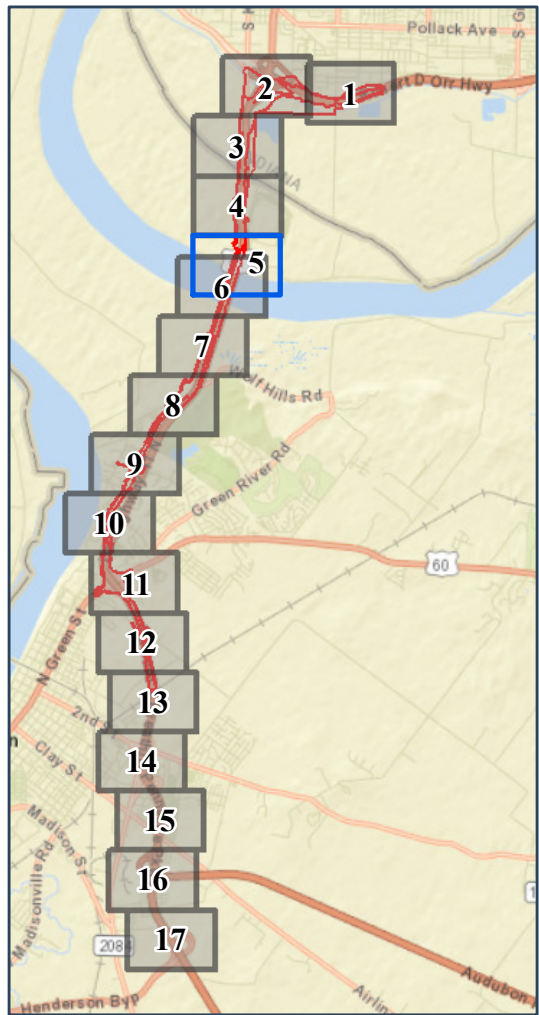
OHIO RIVER  
CROSSING

Final Environmental Impact Statement



0 400 800  
Feet

1 Inch = 400 Feet



- Construction Limits
- Preliminary Right-of-Way
- Bridge Deck
- Planned Subdivisions
- Removed Roads
- Historic Properties
- Section 6(f) Property
- Recreational Section 4(f) Property

- Pedestrian/Bike Facilities**
- Planned**
- Shared-Use Path
  - On-Street Bike Facility
- Existing**
- Shared-Use Path
  - On-Street Bike Facility
  - Recreation Trails

- Relocations**
- Residential
  - Commercial
  - Place of Worship
- Community Resources**
- Library
  - Place of Worship
  - School

- Wetland Reserve Program
- Imperiled Bat Conservation Fund
- Green River National Wildlife Refuge
- Green River National Wildlife Refuge Conservation Partnership Areas
- Existing Wetland Mitigation Sites
- Eagle Slough Natural Area
- Delineated Streams
- Open Water

- Delineated Wetlands
- Wetland Types**
- PEM = Palustrine Emergent  
PSS = Palustrine Scrub-Shrub  
PFO = Palustrine Forested
- Floodway
  - 100- Year Floodplain
  - Noise Impacts
  - Likely Noise Barrier

- Cemetery
- Landfills
- Recognized Environmental Conditions Sites
- Petroleum Wells
- Approximate Landslide Location
- State Boundary Line



# Environmental Features

## West Alternative 2

Appendix A-2 – Sheet 6 of 17

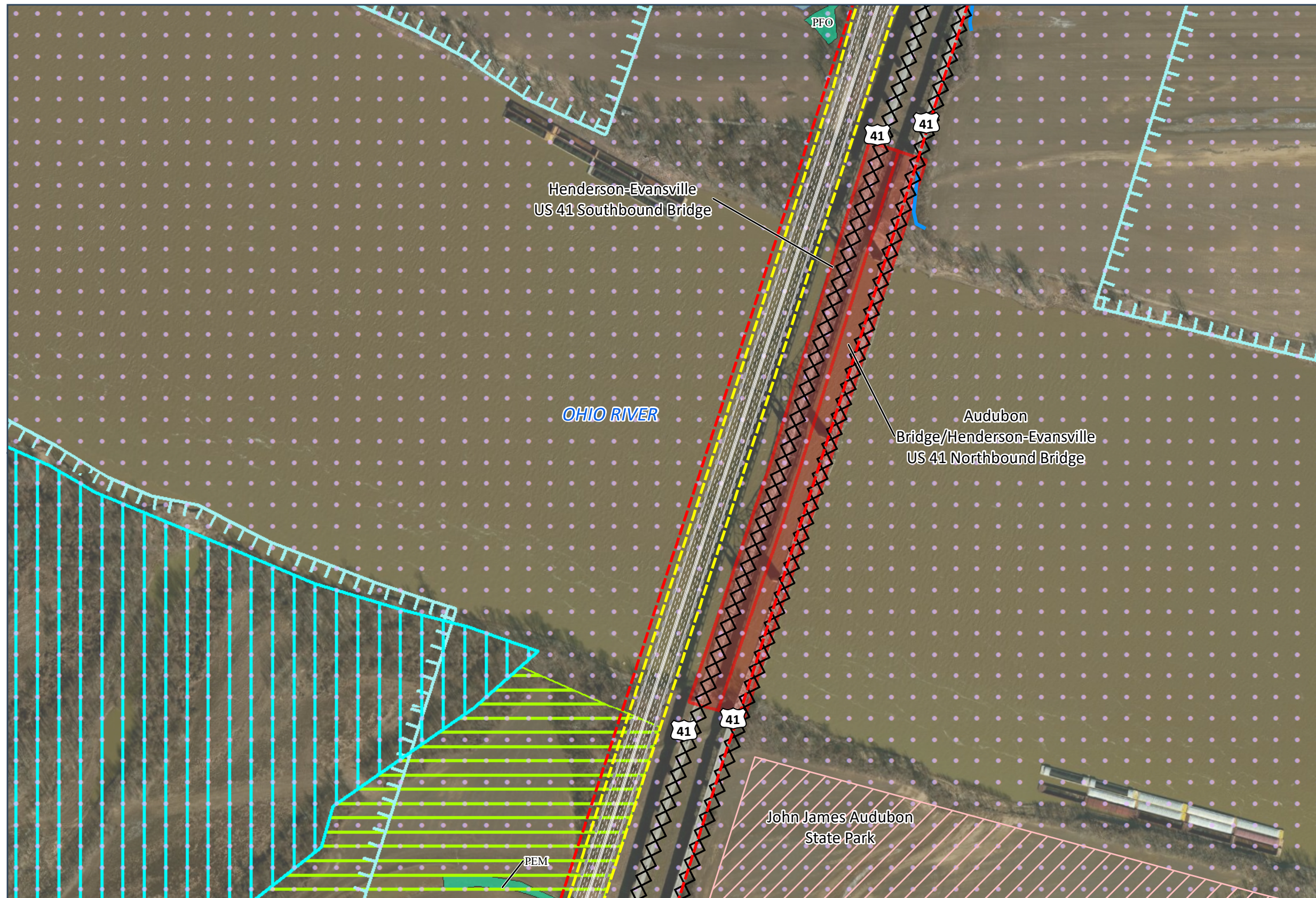
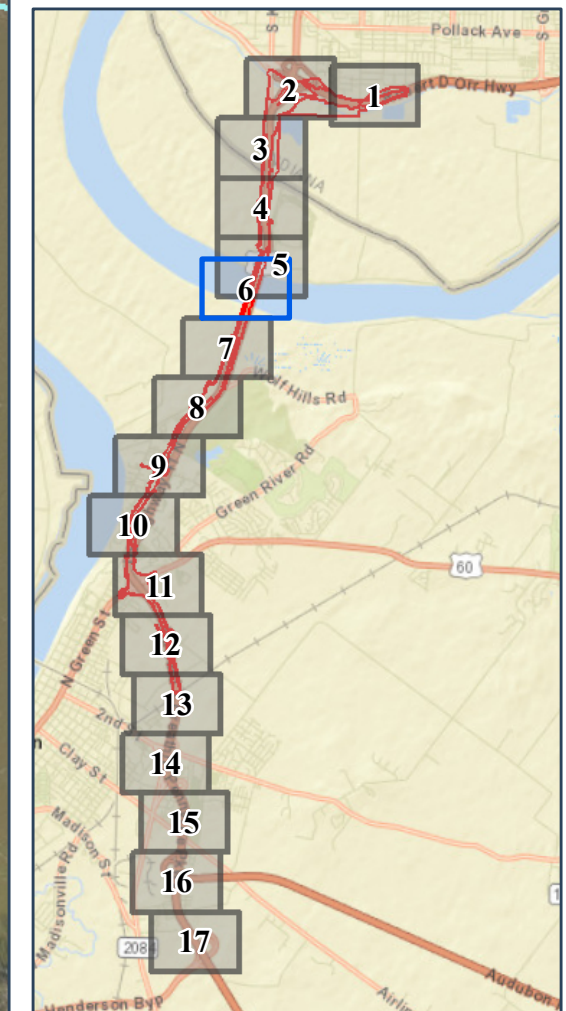


### Final Environmental Impact Statement



0 400 800 Feet

1 Inch = 400 Feet



<ul style="list-style-type: none"><li>Construction Limits</li><li>Preliminary Right-of-Way</li><li>Bridge Deck</li><li>Planned Subdivisions</li><li>Removed Roads</li><li>Historic Properties</li><li>Section 6(f) Property</li><li>Recreational Section 4(f) Property</li></ul>	<b>Pedestrian/Bike Facilities</b> <b>Planned</b> <ul style="list-style-type: none"><li>Shared-Use Path</li><li>On-Street Bike Facility</li></ul> <b>Existing</b> <ul style="list-style-type: none"><li>Shared-Use Path</li><li>On-Street Bike Facility</li><li>Recreation Trails</li></ul>	<b>Relocations</b> <ul style="list-style-type: none"><li>Residential</li><li>Commercial</li><li>Place of Worship</li></ul> <b>Community Resources</b> <ul style="list-style-type: none"><li>Library</li><li>Place of Worship</li><li>School</li></ul>	<ul style="list-style-type: none"><li>Wetland Reserve Program</li><li>Imperiled Bat Conservation Fund</li><li>Green River National Wildlife Refuge</li><li>Green River National Wildlife Refuge Conservation Partnership Areas</li><li>Existing Wetland Mitigation Sites</li><li>Eagle Slough Natural Area</li><li>Delineated Streams</li><li>Open Water</li></ul>	<ul style="list-style-type: none"><li>Delineated Wetlands</li></ul> <b>Wetland Types</b> <ul style="list-style-type: none"><li>PEM = Palustrine Emergent</li><li>PSS = Palustrine Scrub-Shrub</li><li>PFO = Palustrine Forested</li><li>Floodway</li><li>100- Year Floodplain</li><li>Noise Impacts</li><li>Likely Noise Barrier</li></ul>	<ul style="list-style-type: none"><li>Cemetery</li><li>Landfills</li><li>Recognized Environmental Conditions Sites</li><li>Petroleum Wells</li><li>Approximate Landslide Location</li><li>State Boundary Line</li></ul>
--	---	---	--	--	---



Environmental Features

West Alternative 2

Appendix A-2 – Sheet 7 of 17



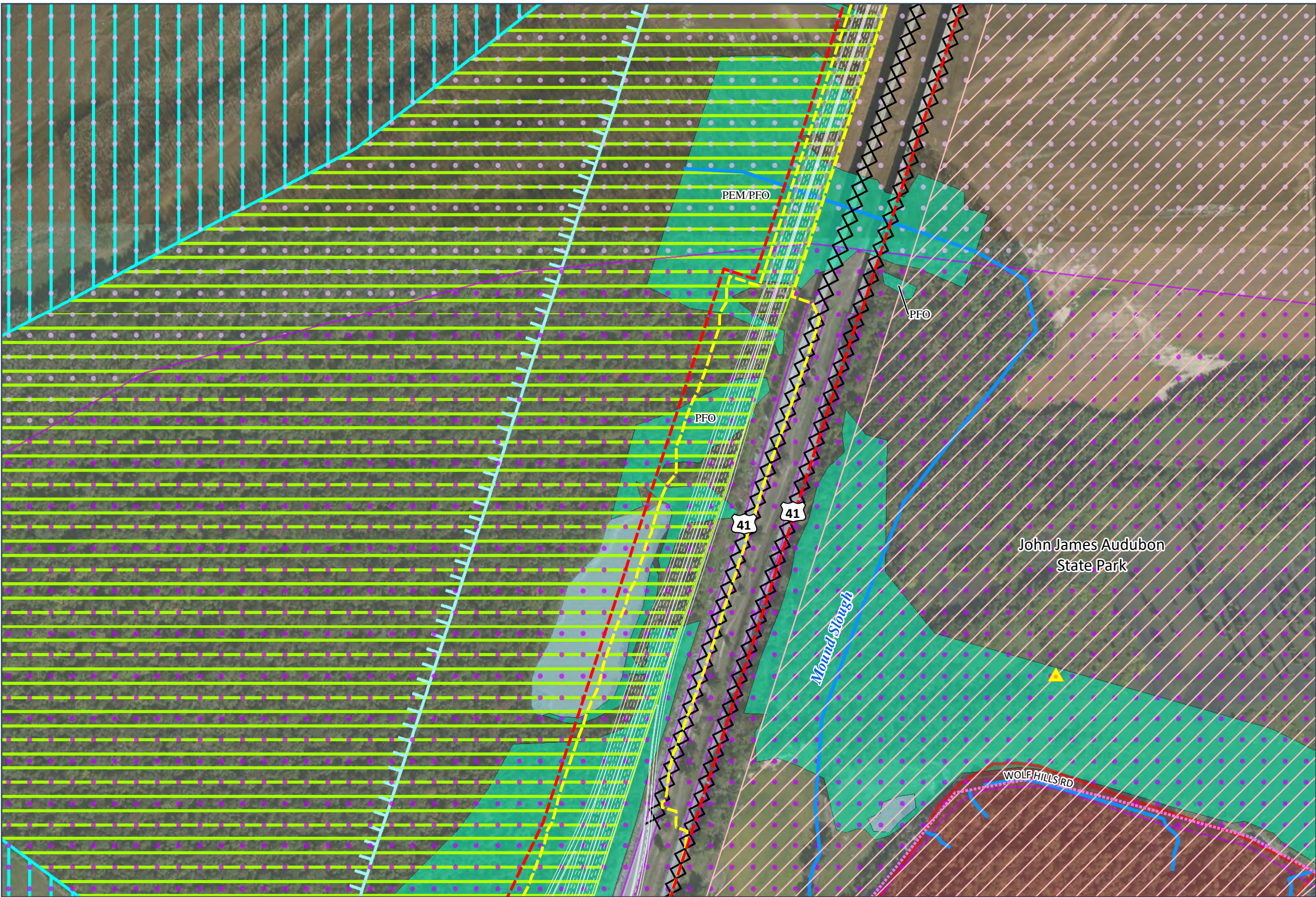
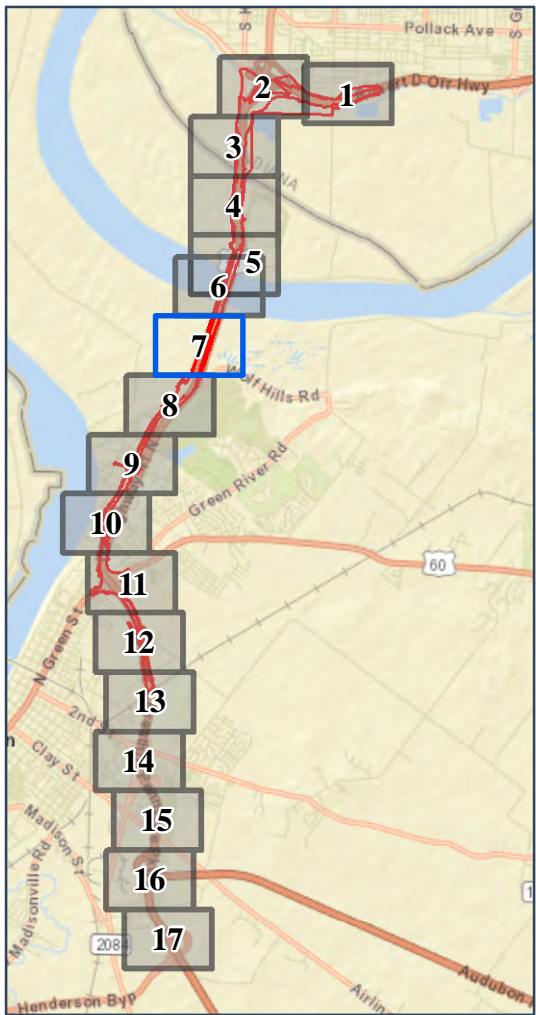
OHIO RIVER  
CROSSING

Final Environmental Impact Statement



0 400 800  
Feet

1 Inch = 400 Feet



- Construction Limits
- Preliminary Right-of-Way
- Bridge Deck
- Planned Subdivisions
- Removed Roads
- Historic Properties
- Section 6(f) Property
- Recreational Section 4(f) Property

- Pedestrian/Bike Facilities**
- Planned**
- Shared-Use Path
  - On-Street Bike Facility
- Existing**
- Shared-Use Path
  - On-Street Bike Facility
  - Recreation Trails

- Relocations**
- Residential
  - Commercial
  - Place of Worship
- Community Resources**
- Library
  - Place of Worship
  - School

- Wetland Reserve Program
- Imperiled Bat Conservation Fund
- Green River National Wildlife Refuge
- Green River National Wildlife Refuge Conservation Partnership Areas
- Existing Wetland Mitigation Sites
- Eagle Slough Natural Area
- Delineated Streams
- Open Water

- Delineated Wetlands**
- Wetland Types**
- PEM = Palustrine Emergent  
PSS = Palustrine Scrub-Shrub  
PFO = Palustrine Forested
- Floodway
  - 100- Year Floodplain
  - Noise Impacts
  - Likely Noise Barrier

- Cemetery
- Landfills
- Recognized Environmental Conditions Sites
- Petroleum Wells
- Approximate Landslide Location
- State Boundary Line



# Environmental Features

## West Alternative 2

Appendix A-2 – Sheet 8 of 17

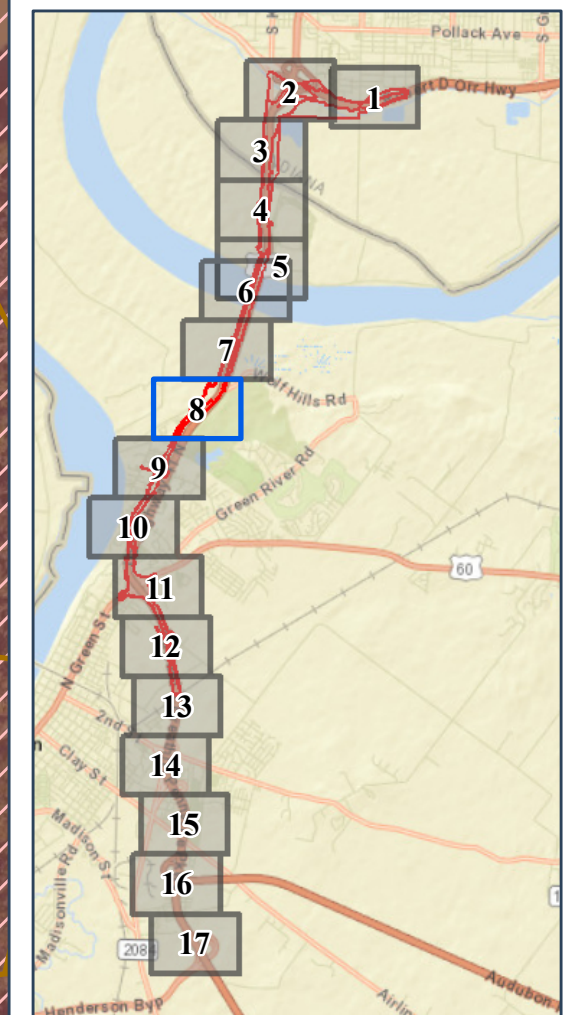
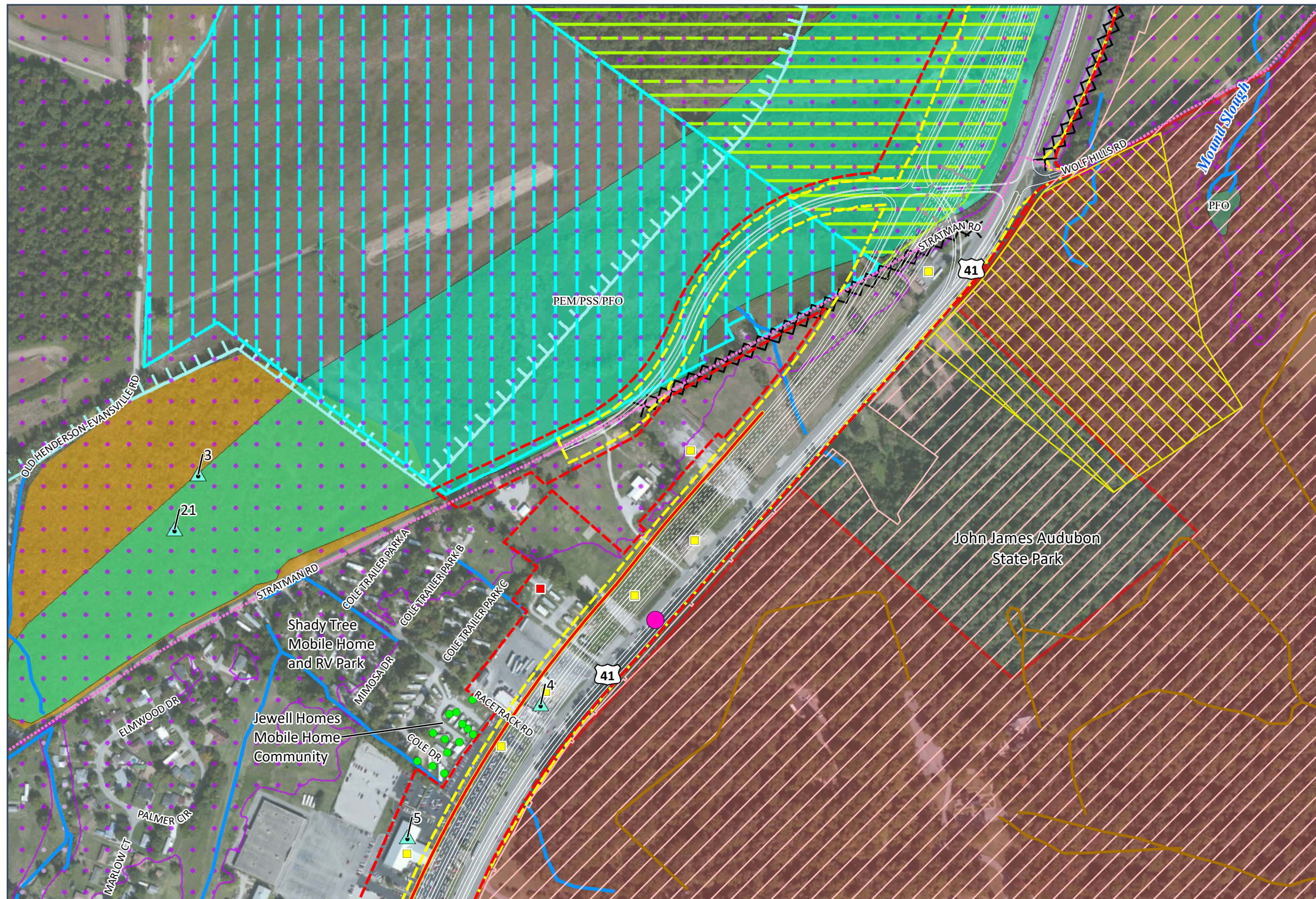


### Final Environmental Impact Statement



0 400 800 Feet

1 Inch = 400 Feet



<ul style="list-style-type: none"><li>Construction Limits</li><li>Preliminary Right-of-Way</li><li>Bridge Deck</li><li>Planned Subdivisions</li><li>Removed Roads</li><li>Historic Properties</li><li>Section 6(f) Property</li><li>Recreational Section 4(f) Property</li></ul>	<b>Pedestrian/Bike Facilities</b> <b>Planned</b> <ul style="list-style-type: none"><li>Shared-Use Path</li><li>On-Street Bike Facility</li></ul> <b>Existing</b> <ul style="list-style-type: none"><li>Shared-Use Path</li><li>On-Street Bike Facility</li><li>Recreation Trails</li></ul>	<b>Relocations</b> <ul style="list-style-type: none"><li>Residential</li><li>Commercial</li><li>Place of Worship</li></ul> <b>Community Resources</b> <ul style="list-style-type: none"><li>Library</li><li>Place of Worship</li><li>School</li></ul>	<ul style="list-style-type: none"><li>Wetland Reserve Program</li><li>Imperiled Bat Conservation Fund</li><li>Green River National Wildlife Refuge</li><li>Green River National Wildlife Refuge Conservation Partnership Areas</li><li>Existing Wetland Mitigation Sites</li><li>Eagle Slough Natural Area</li><li>Delineated Streams</li><li>Open Water</li></ul>	<ul style="list-style-type: none"><li>Delineated Wetlands</li></ul> <b>Wetland Types</b> <ul style="list-style-type: none"><li>PEM = Palustrine Emergent</li><li>PSS = Palustrine Scrub-Shrub</li><li>PFO = Palustrine Forested</li><li>Floodway</li><li>100- Year Floodplain</li><li>Noise Impacts</li><li>Likely Noise Barrier</li></ul>	<ul style="list-style-type: none"><li>Cemetery</li><li>Landfills</li><li>Recognized Environmental Conditions Sites</li><li>Petroleum Wells</li><li>Approximate Landslide Location</li><li>State Boundary Line</li></ul>
--	---	---	--	--	---



Environmental Features

West Alternative 2

Appendix A-2 – Sheet 9 of 17



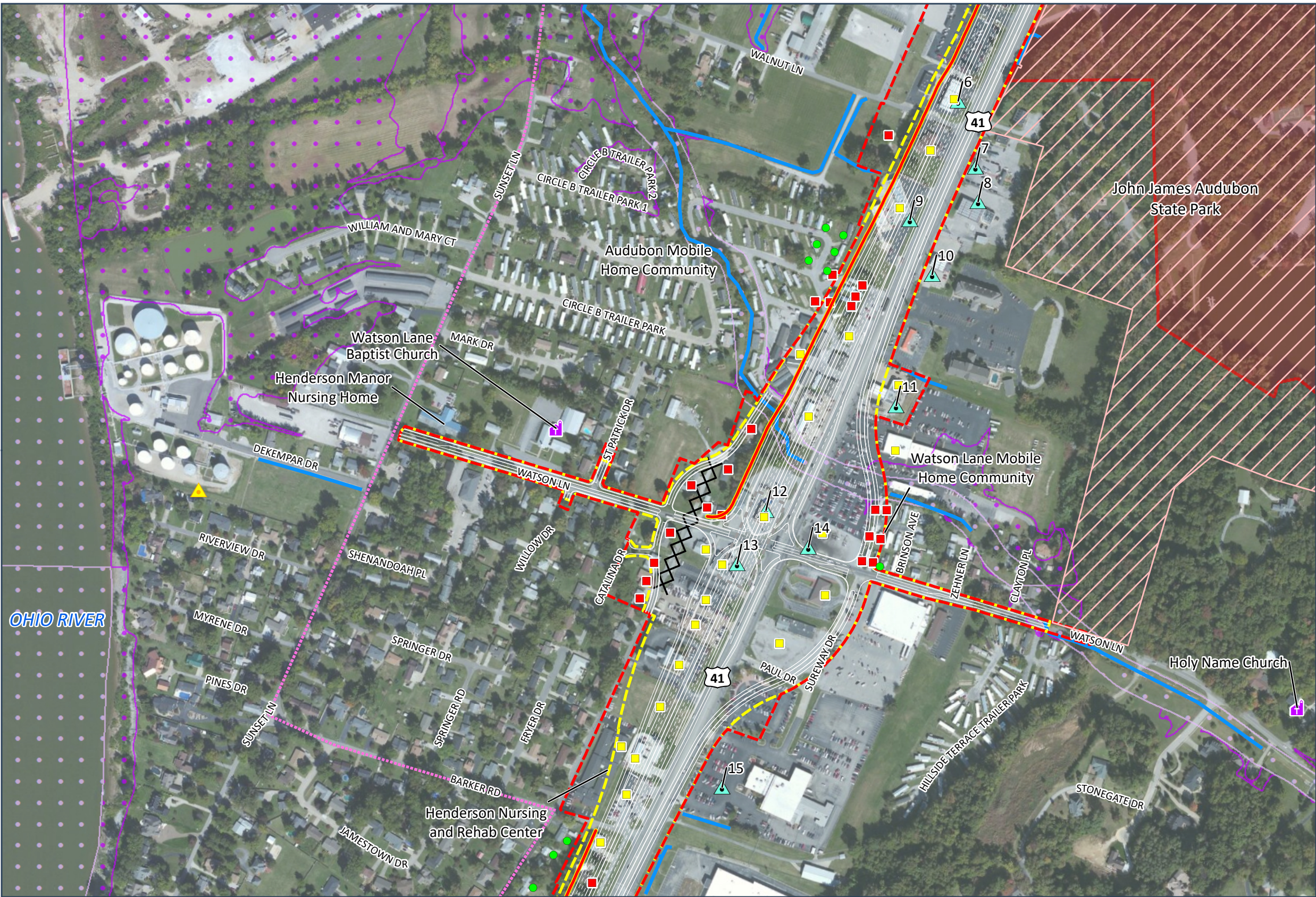
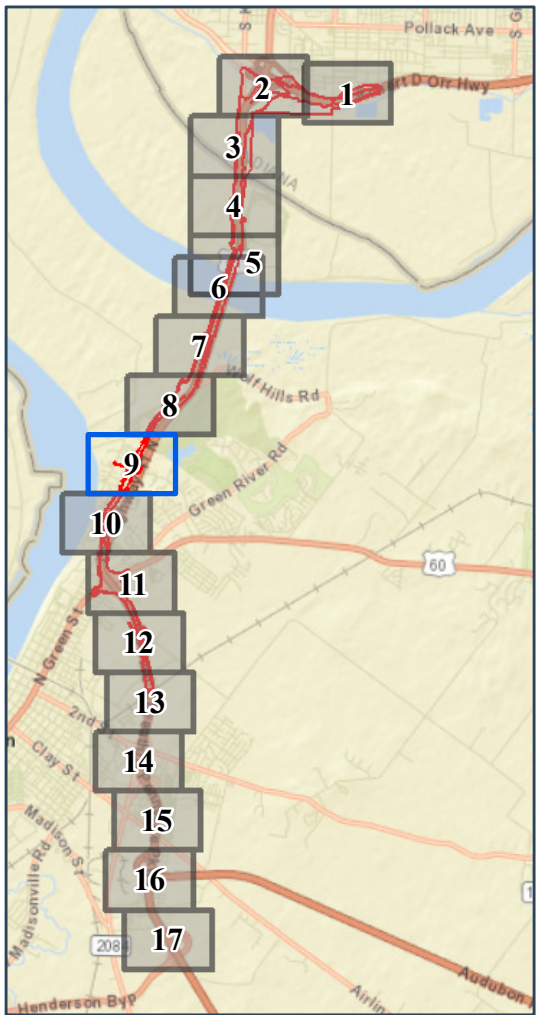
OHIO RIVER  
CROSSING

Final Environmental Impact Statement



0 400 800  
Feet

1 Inch = 400 Feet



- Construction Limits
- Preliminary Right-of-Way
- Bridge Deck
- Planned Subdivisions
- Removed Roads
- Historic Properties
- Section 6(f) Property
- Recreational Section 4(f) Property

- Pedestrian/Bike Facilities**
- Planned**
- Shared-Use Path
  - On-Street Bike Facility
- Existing**
- Shared-Use Path
  - On-Street Bike Facility
  - Recreation Trails

- Relocations**
- Residential
  - Commercial
  - Place of Worship
- Community Resources**
- Library
  - Place of Worship
  - School

- Wetland Reserve Program
- Imperiled Bat Conservation Fund
- Green River National Wildlife Refuge
- Green River National Wildlife Refuge Conservation Partnership Areas
- Existing Wetland Mitigation Sites
- Eagle Slough Natural Area
- Delineated Streams
- Open Water

- Delineated Wetlands
- Wetland Types**
- PEM = Palustrine Emergent  
PSS = Palustrine Scrub-Shrub  
PFO = Palustrine Forested
- Floodway
  - 100- Year Floodplain
  - Noise Impacts
  - Likely Noise Barrier

- Cemetery
- Landfills
- Recognized Environmental Conditions Sites
- Petroleum Wells
- Approximate Landslide Location
- State Boundary Line



# Environmental Features

## West Alternative 2

Appendix A-2 – Sheet 10 of 17

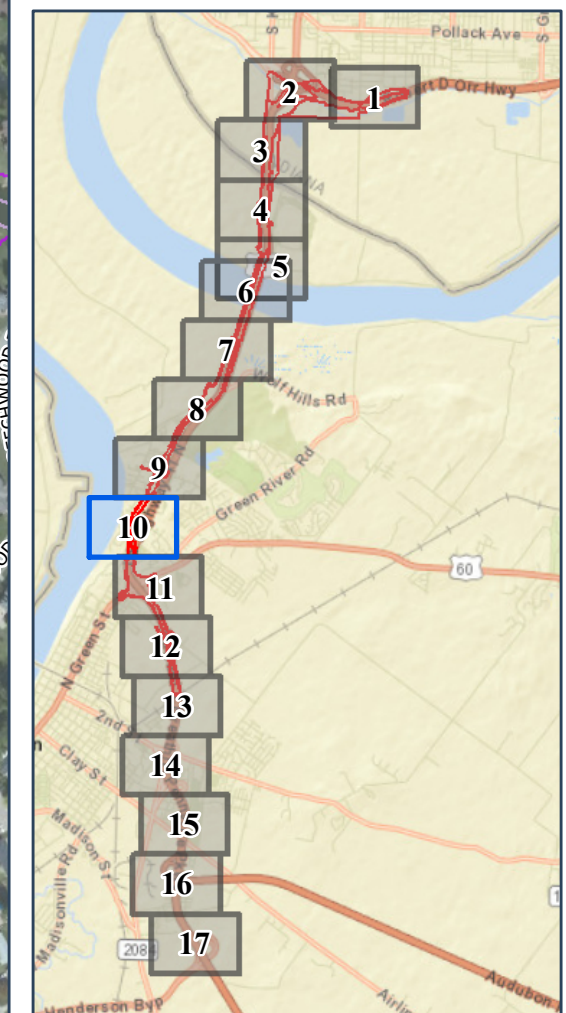


### Final Environmental Impact Statement



0 400 800 Feet

1 Inch = 400 Feet



<ul style="list-style-type: none"><li>Construction Limits</li><li>Preliminary Right-of-Way</li><li>Bridge Deck</li><li>Planned Subdivisions</li><li>Removed Roads</li><li>Historic Properties</li><li>Section 6(f) Property</li><li>Recreational Section 4(f) Property</li></ul>	<b>Pedestrian/Bike Facilities</b> <b>Planned</b> <ul style="list-style-type: none"><li>Shared-Use Path</li><li>On-Street Bike Facility</li></ul> <b>Existing</b> <ul style="list-style-type: none"><li>Shared-Use Path</li><li>On-Street Bike Facility</li><li>Recreation Trails</li></ul>	<b>Relocations</b> <ul style="list-style-type: none"><li>Residential</li><li>Commercial</li><li>Place of Worship</li></ul> <b>Community Resources</b> <ul style="list-style-type: none"><li>Library</li><li>Place of Worship</li><li>School</li></ul>	<ul style="list-style-type: none"><li>Wetland Reserve Program</li><li>Imperiled Bat Conservation Fund</li><li>Green River National Wildlife Refuge</li><li>Green River National Wildlife Refuge Conservation Partnership Areas</li><li>Existing Wetland Mitigation Sites</li><li>Eagle Slough Natural Area</li><li>Delineated Streams</li><li>Open Water</li></ul>	<ul style="list-style-type: none"><li>Delineated Wetlands</li></ul> <b>Wetland Types</b> <p>PEM = Palustrine Emergent PSS = Palustrine Scrub-Shrub PFO = Palustrine Forested</p> <ul style="list-style-type: none"><li>Floodway</li><li>100- Year Floodplain</li><li>Noise Impacts</li><li>Likely Noise Barrier</li></ul>	<ul style="list-style-type: none"><li>Cemetery</li><li>Landfills</li><li>Recognized Environmental Conditions Sites</li><li>Petroleum Wells</li><li>Approximate Landslide Location</li><li>State Boundary Line</li></ul>
--	---	---	--	---	---



# Environmental Features

## West Alternative 2

Appendix A-2 – Sheet 11 of 17

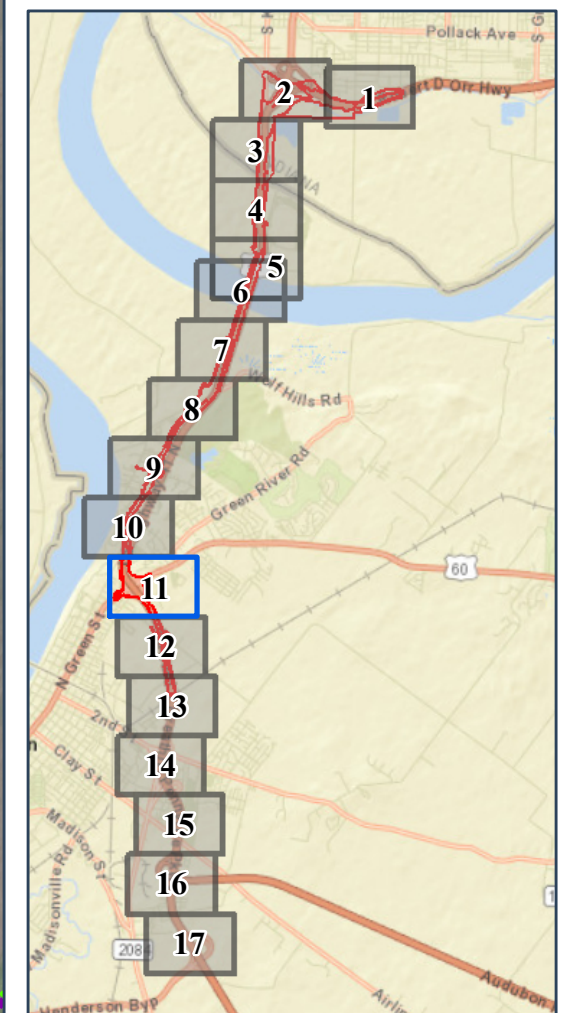
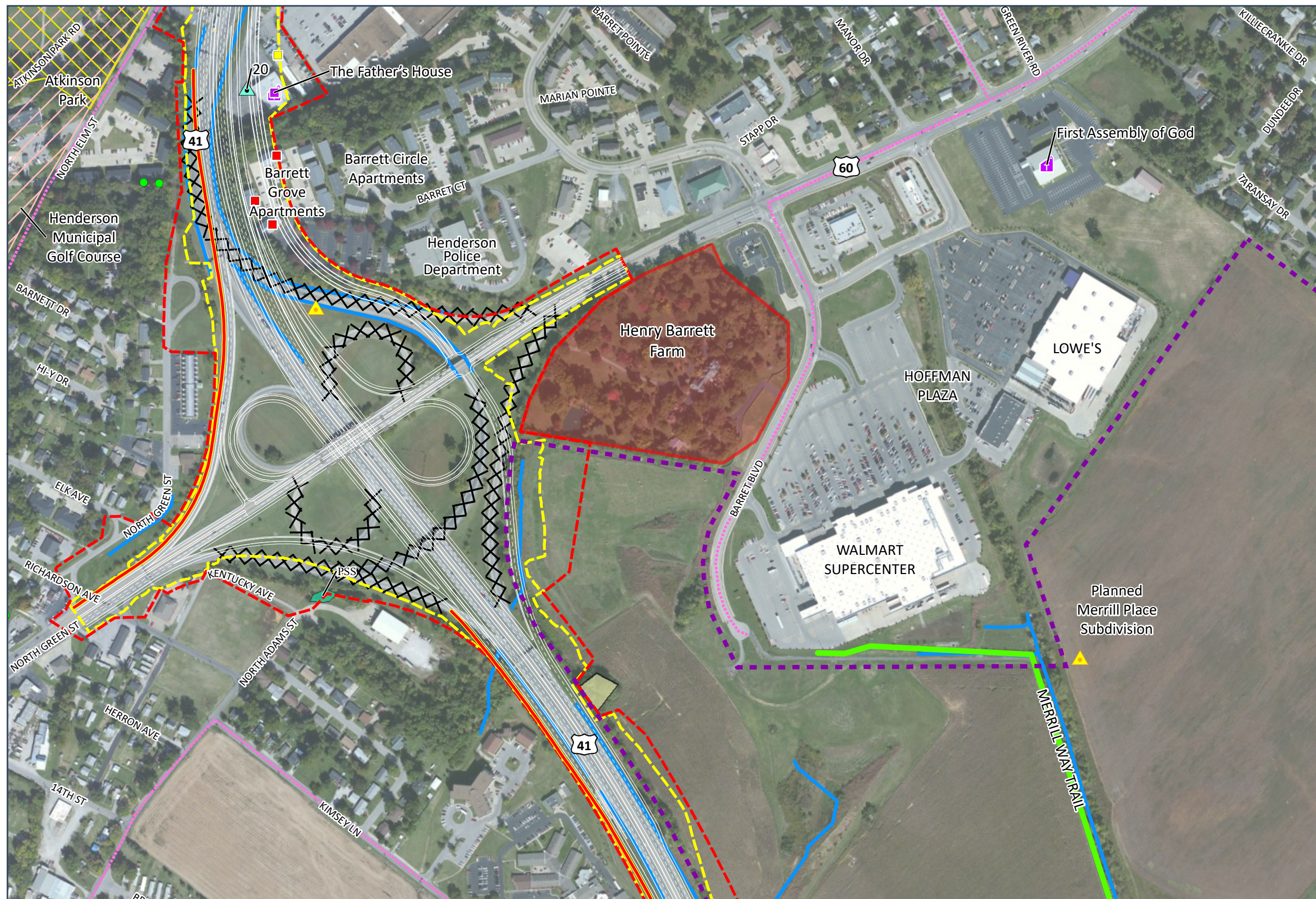


### Final Environmental Impact Statement



0 400 800 Feet

1 Inch = 400 Feet



<ul style="list-style-type: none"><li>Construction Limits</li><li>Preliminary Right-of-Way</li><li>Bridge Deck</li><li>Planned Subdivisions</li><li>Removed Roads</li><li>Historic Properties</li><li>Section 6(f) Property</li><li>Recreational Section 4(f) Property</li></ul>	<b>Pedestrian/Bike Facilities</b> <b>Planned</b> <ul style="list-style-type: none"><li>Shared-Use Path</li><li>On-Street Bike Facility</li></ul> <b>Existing</b> <ul style="list-style-type: none"><li>Shared-Use Path</li><li>On-Street Bike Facility</li><li>Recreation Trails</li></ul>	<b>Relocations</b> <ul style="list-style-type: none"><li>Residential</li><li>Commercial</li><li>Place of Worship</li></ul> <b>Community Resources</b> <ul style="list-style-type: none"><li>Library</li><li>Place of Worship</li><li>School</li></ul>	<ul style="list-style-type: none"><li>Wetland Reserve Program</li><li>Imperiled Bat Conservation Fund</li><li>Green River National Wildlife Refuge</li><li>Green River National Wildlife Refuge Conservation Partnership Areas</li><li>Existing Wetland Mitigation Sites</li><li>Eagle Slough Natural Area</li><li>Delineated Streams</li><li>Open Water</li></ul>	<ul style="list-style-type: none"><li>Delineated Wetlands</li></ul> <b>Wetland Types</b> <p>PEM = Palustrine Emergent PSS = Palustrine Scrub-Shrub PFO = Palustrine Forested</p> <ul style="list-style-type: none"><li>Floodway</li><li>100- Year Floodplain</li><li>Noise Impacts</li><li>Likely Noise Barrier</li></ul>	<ul style="list-style-type: none"><li>Cemetery</li><li>Landfills</li><li>Recognized Environmental Conditions Sites</li><li>Petroleum Wells</li><li>Approximate Landslide Location</li><li>State Boundary Line</li></ul>
--	---	---	--	---	---



# Environmental Features

## West Alternative 2

Appendix A-2 – Sheet 12 of 17

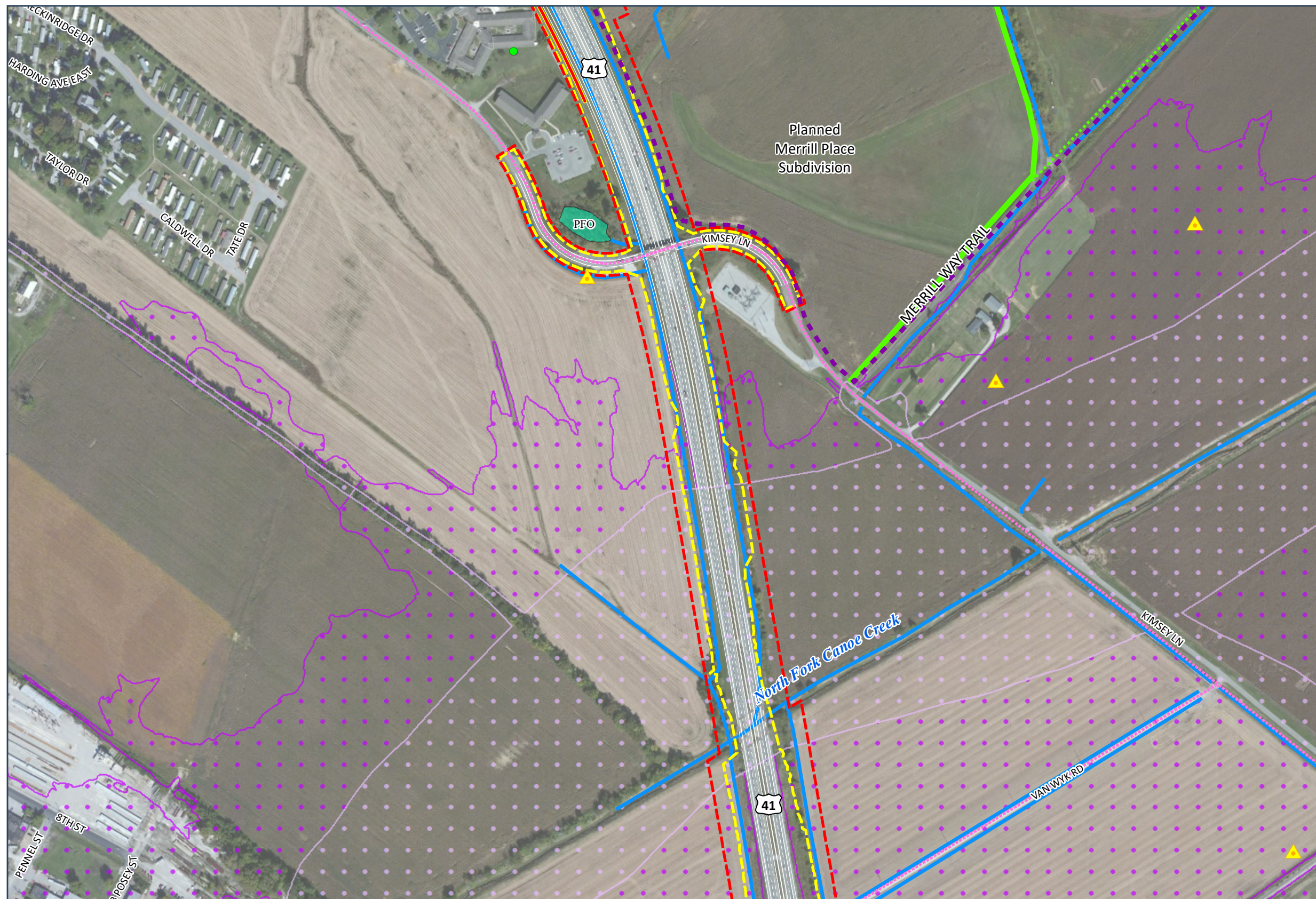
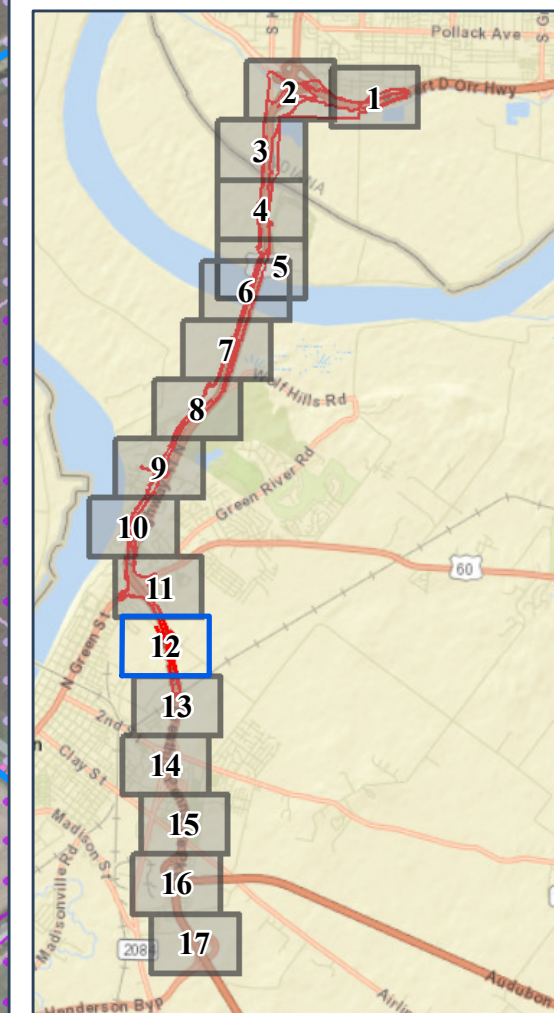


### Final Environmental Impact Statement



0 400 800 Feet

1 Inch = 400 Feet



<ul style="list-style-type: none"> <li>--- Construction Limits</li> <li>--- Preliminary Right-of-Way</li> <li>--- Bridge Deck</li> <li>--- Planned Subdivisions</li> <li>--- Removed Roads</li> <li>--- Historic Properties</li> <li>--- Section 6(f) Property</li> <li>--- Recreational Section 4(f) Property</li> </ul>	<b>Pedestrian/Bike Facilities</b> <b>Planned</b> <ul style="list-style-type: none"> <li>--- Shared-Use Path</li> <li>--- On-Street Bike Facility</li> </ul> <b>Existing</b> <ul style="list-style-type: none"> <li>--- Shared-Use Path</li> <li>--- On-Street Bike Facility</li> <li>--- Recreation Trails</li> </ul>	<b>Relocations</b> <ul style="list-style-type: none"> <li>■ Residential</li> <li>■ Commercial</li> <li>■ Place of Worship</li> </ul> <b>Community Resources</b> <ul style="list-style-type: none"> <li>■ Library</li> <li>■ Place of Worship</li> <li>■ School</li> </ul>	<ul style="list-style-type: none"> <li>Wetland Reserve Program</li> <li>Imperiled Bat Conservation Fund</li> <li>Green River National Wildlife Refuge</li> <li>Green River National Wildlife Refuge Conservation Partnership Areas</li> <li>Existing Wetland Mitigation Sites</li> <li>Eagle Slough Natural Area</li> <li>Delineated Streams</li> <li>Open Water</li> </ul>	<ul style="list-style-type: none"> <li>Delineated Wetlands</li> </ul> <b>Wetland Types</b> PEM = Palustrine Emergent PSS = Palustrine Scrub-Shrub PFO = Palustrine Forested Floodway 100- Year Floodplain Noise Impacts Likely Noise Barrier	<ul style="list-style-type: none"> <li>Cemetery</li> <li>Landfills</li> <li>Recognized Environmental Conditions Sites</li> <li>Petroleum Wells</li> <li>Approximate Landslide Location</li> <li>State Boundary Line</li> </ul>
---	--	---	---	---	--







Environmental Features

West Alternative 2

Appendix A-2 – Sheet 14 of 17



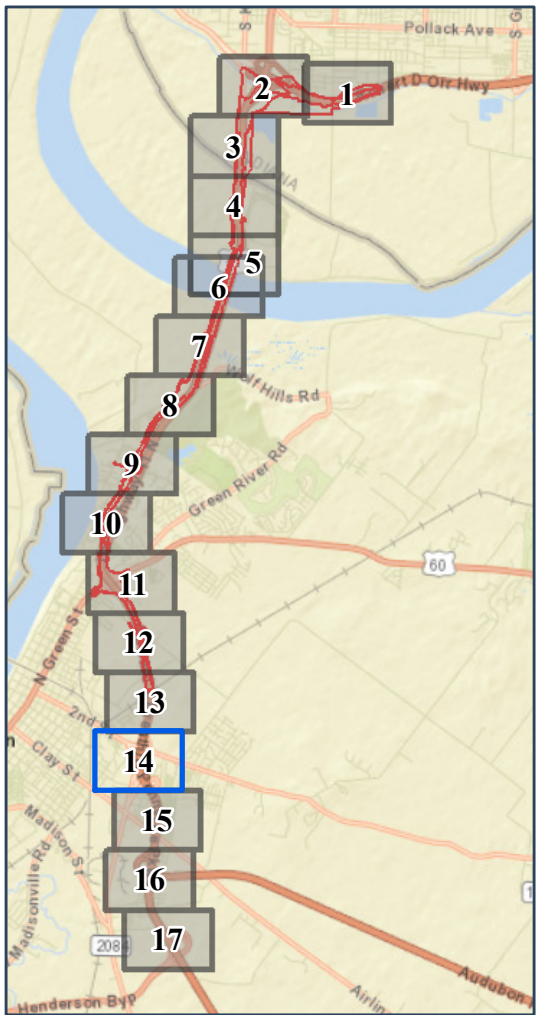
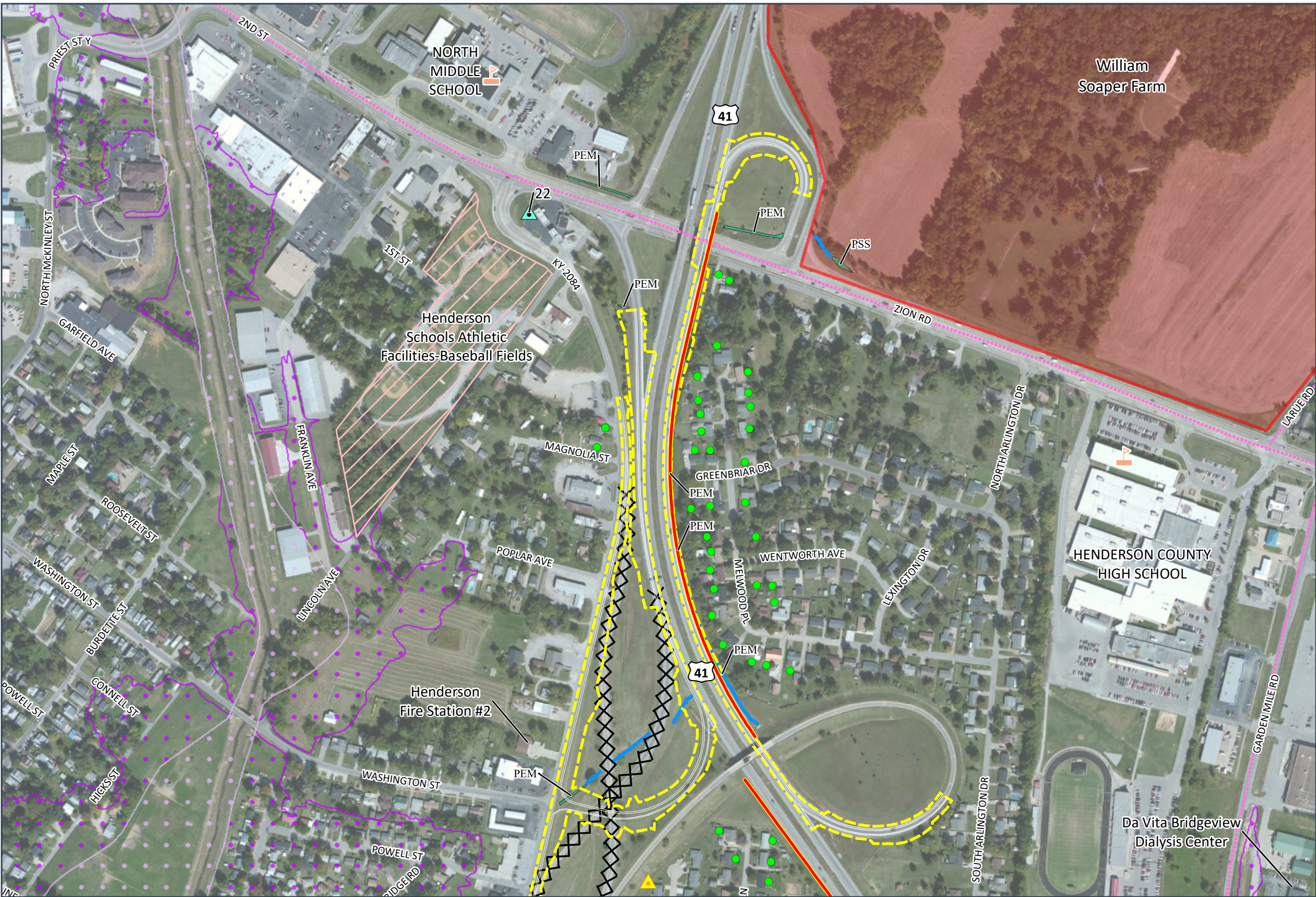
OHIO RIVER  
CROSSING

Final Environmental Impact Statement



0 400 800 Feet

1 Inch = 400 Feet



- Construction Limits
- Preliminary Right-of-Way
- Bridge Deck
- Planned Subdivisions
- Removed Roads
- Historic Properties
- Section 6(f) Property
- Recreational Section 4(f) Property

- Pedestrian/Bike Facilities**
- Planned**
- Shared-Use Path
  - On-Street Bike Facility
- Existing**
- Shared-Use Path
  - On-Street Bike Facility
  - Recreation Trails

- Relocations**
- Residential
  - Commercial
  - Place of Worship
- Community Resources**
- Library
  - Place of Worship
  - School

- Wetland Reserve Program
- Imperiled Bat Conservation Fund
- Green River National Wildlife Refuge
- Green River National Wildlife Refuge Conservation Partnership Areas
- Existing Wetland Mitigation Sites
- Eagle Slough Natural Area
- Delineated Streams
- Open Water

- Delineated Wetlands
- Wetland Types**
- PEM = Palustrine Emergent  
PSS = Palustrine Scrub-Shrub  
PFO = Palustrine Forested
- Floodway
  - 100- Year Floodplain
  - Noise Impacts
  - Likely Noise Barrier

- Cemetery
- Landfills
- Recognized Environmental Conditions Sites
- Petroleum Wells
- Approximate Landslide Location
- State Boundary Line



# Environmental Features

## West Alternative 2

Appendix A-2 – Sheet 15 of 17

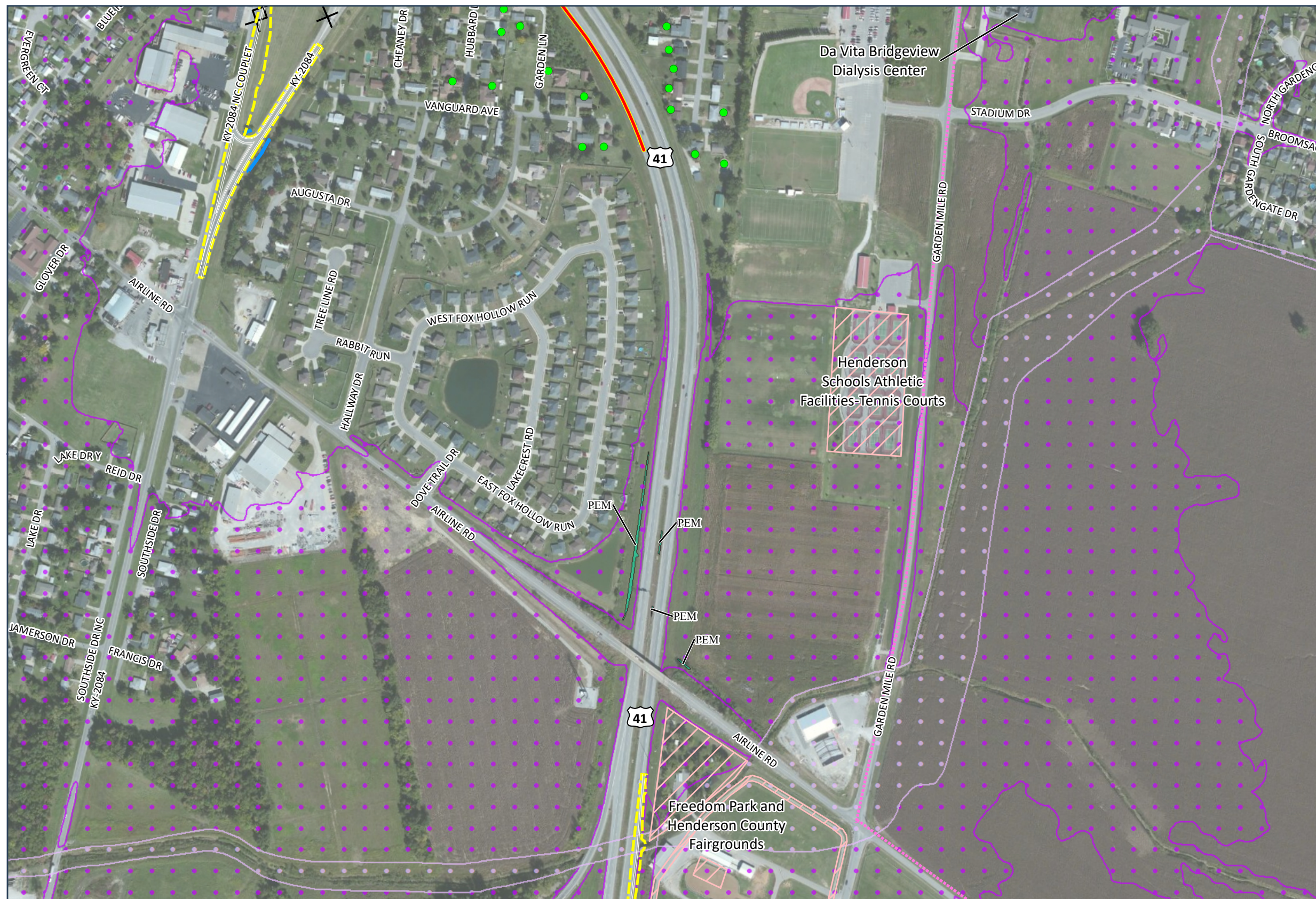
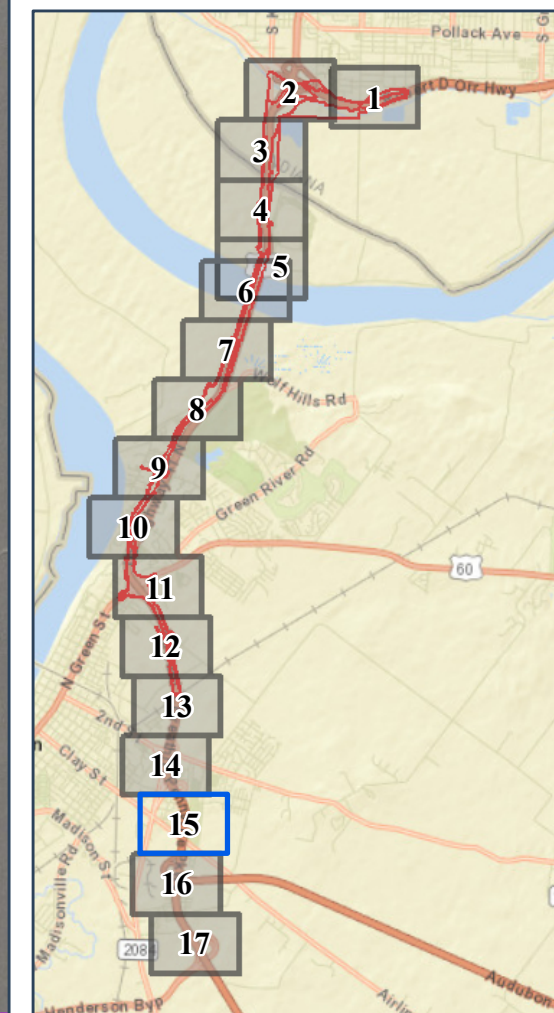


### Final Environmental Impact Statement



0 400 800 Feet

1 Inch = 400 Feet



<ul style="list-style-type: none"><li>Construction Limits</li><li>Preliminary Right-of-Way</li><li>Bridge Deck</li><li>Planned Subdivisions</li><li>Removed Roads</li><li>Historic Properties</li><li>Section 6(f) Property</li><li>Recreational Section 4(f) Property</li></ul>	<b>Pedestrian/Bike Facilities</b> <b>Planned</b> <ul style="list-style-type: none"><li>Shared-Use Path</li><li>On-Street Bike Facility</li></ul> <b>Existing</b> <ul style="list-style-type: none"><li>Shared-Use Path</li><li>On-Street Bike Facility</li><li>Recreation Trails</li></ul>	<b>Relocations</b> <ul style="list-style-type: none"><li>Residential</li><li>Commercial</li><li>Place of Worship</li></ul> <b>Community Resources</b> <ul style="list-style-type: none"><li>Library</li><li>Place of Worship</li><li>School</li></ul>	<ul style="list-style-type: none"><li>Wetland Reserve Program</li><li>Imperiled Bat Conservation Fund</li><li>Green River National Wildlife Refuge</li><li>Green River National Wildlife Refuge Conservation Partnership Areas</li><li>Existing Wetland Mitigation Sites</li><li>Eagle Slough Natural Area</li><li>Delineated Streams</li><li>Open Water</li></ul>	<ul style="list-style-type: none"><li>Delineated Wetlands</li></ul> <b>Wetland Types</b> <ul style="list-style-type: none"><li>PEM = Palustrine Emergent</li><li>PSS = Palustrine Scrub-Shrub</li><li>PFO = Palustrine Forested</li><li>Floodway</li><li>100- Year Floodplain</li><li>Noise Impacts</li><li>Likely Noise Barrier</li></ul>	<ul style="list-style-type: none"><li>Cemetery</li><li>Landfills</li><li>Recognized Environmental Conditions Sites</li><li>Petroleum Wells</li><li>Approximate Landslide Location</li><li>State Boundary Line</li></ul>
--	---	---	--	--	---



# Environmental Features

## West Alternative 2

Appendix A-2 – Sheet 16 of 17

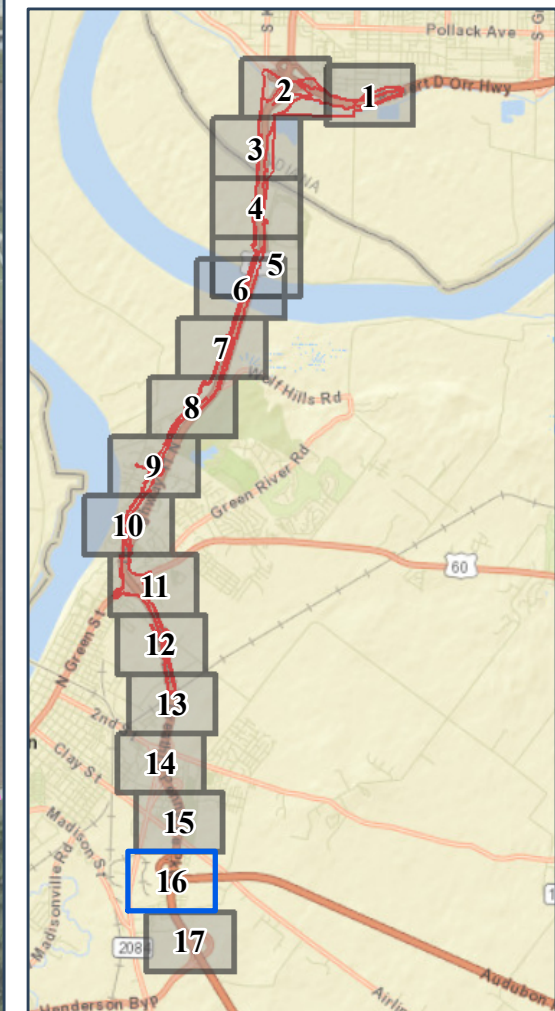


### Final Environmental Impact Statement



0 400 800 Feet

1 Inch = 400 Feet



<ul style="list-style-type: none"><li>Construction Limits</li><li>Preliminary Right-of-Way</li><li>Bridge Deck</li><li>Planned Subdivisions</li><li>Removed Roads</li><li>Historic Properties</li><li>Section 6(f) Property</li><li>Recreational Section 4(f) Property</li></ul>	<b>Pedestrian/Bike Facilities</b> <b>Planned</b> <ul style="list-style-type: none"><li>Shared-Use Path</li><li>On-Street Bike Facility</li></ul> <b>Existing</b> <ul style="list-style-type: none"><li>Shared-Use Path</li><li>On-Street Bike Facility</li><li>Recreation Trails</li></ul>	<b>Relocations</b> <ul style="list-style-type: none"><li>Residential</li><li>Commercial</li><li>Place of Worship</li></ul> <b>Community Resources</b> <ul style="list-style-type: none"><li>Library</li><li>Place of Worship</li><li>School</li></ul>	<ul style="list-style-type: none"><li>Wetland Reserve Program</li><li>Imperiled Bat Conservation Fund</li><li>Green River National Wildlife Refuge</li><li>Green River National Wildlife Refuge Conservation Partnership Areas</li><li>Existing Wetland Mitigation Sites</li><li>Eagle Slough Natural Area</li><li>Delineated Streams</li><li>Open Water</li></ul>	<ul style="list-style-type: none"><li>Delineated Wetlands</li></ul> <b>Wetland Types</b> <p>PEM = Palustrine Emergent PSS = Palustrine Scrub-Shrub PFO = Palustrine Forested</p> <ul style="list-style-type: none"><li>Floodway</li><li>100- Year Floodplain</li><li>Noise Impacts</li><li>Likely Noise Barrier</li></ul>	<ul style="list-style-type: none"><li>Cemetery</li><li>Landfills</li><li>Recognized Environmental Conditions Sites</li><li>Petroleum Wells</li><li>Approximate Landslide Location</li><li>State Boundary Line</li></ul>
--	---	---	--	---	---





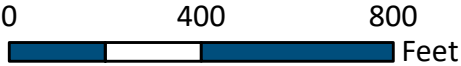
Environmental Features

West Alternative 2

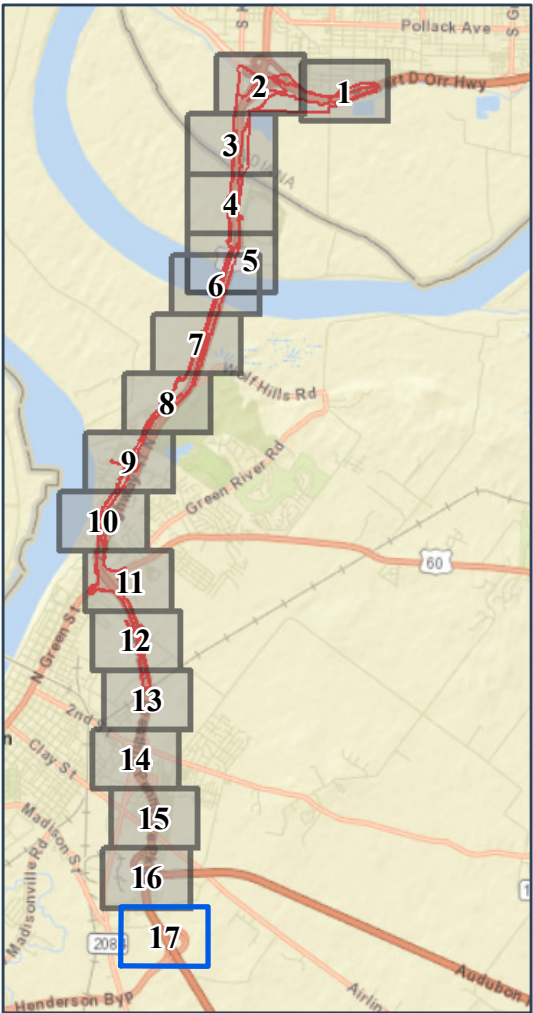
Appendix A-2 – Sheet 17 of 17



Final Environmental Impact Statement



1 Inch = 400 Feet



- Construction Limits
- Preliminary Right-of-Way
- Bridge Deck
- Planned Subdivisions
- Removed Roads
- Historic Properties
- Section 6(f) Property
- Recreational Section 4(f) Property

- Pedestrian/Bike Facilities**
- Planned**
- Shared-Use Path
  - On-Street Bike Facility
- Existing**
- Shared-Use Path
  - On-Street Bike Facility
  - Recreation Trails

- Relocations**
- Residential
  - Commercial
  - Place of Worship
- Community Resources**
- Library
  - Place of Worship
  - School

- Wetland Reserve Program
- Imperiled Bat Conservation Fund
- Green River National Wildlife Refuge
- Green River National Wildlife Refuge Conservation Partnership Areas
- Existing Wetland Mitigation Sites
- Eagle Slough Natural Area
- Delineated Streams
- Open Water

- Delineated Wetlands
- Wetland Types**
- PEM = Palustrine Emergent  
PSS = Palustrine Scrub-Shrub  
PFO = Palustrine Forested
- Floodway
  - 100- Year Floodplain
  - Noise Impacts
  - Likely Noise Barrier

- Cemetery
- Landfills
- Recognized Environmental Conditions Sites
- Petroleum Wells
- Approximate Landslide Location
- State Boundary Line